

**STANDARD  
DEPARTURE CHART  
INSTRUMENT(SID) - ICAO**

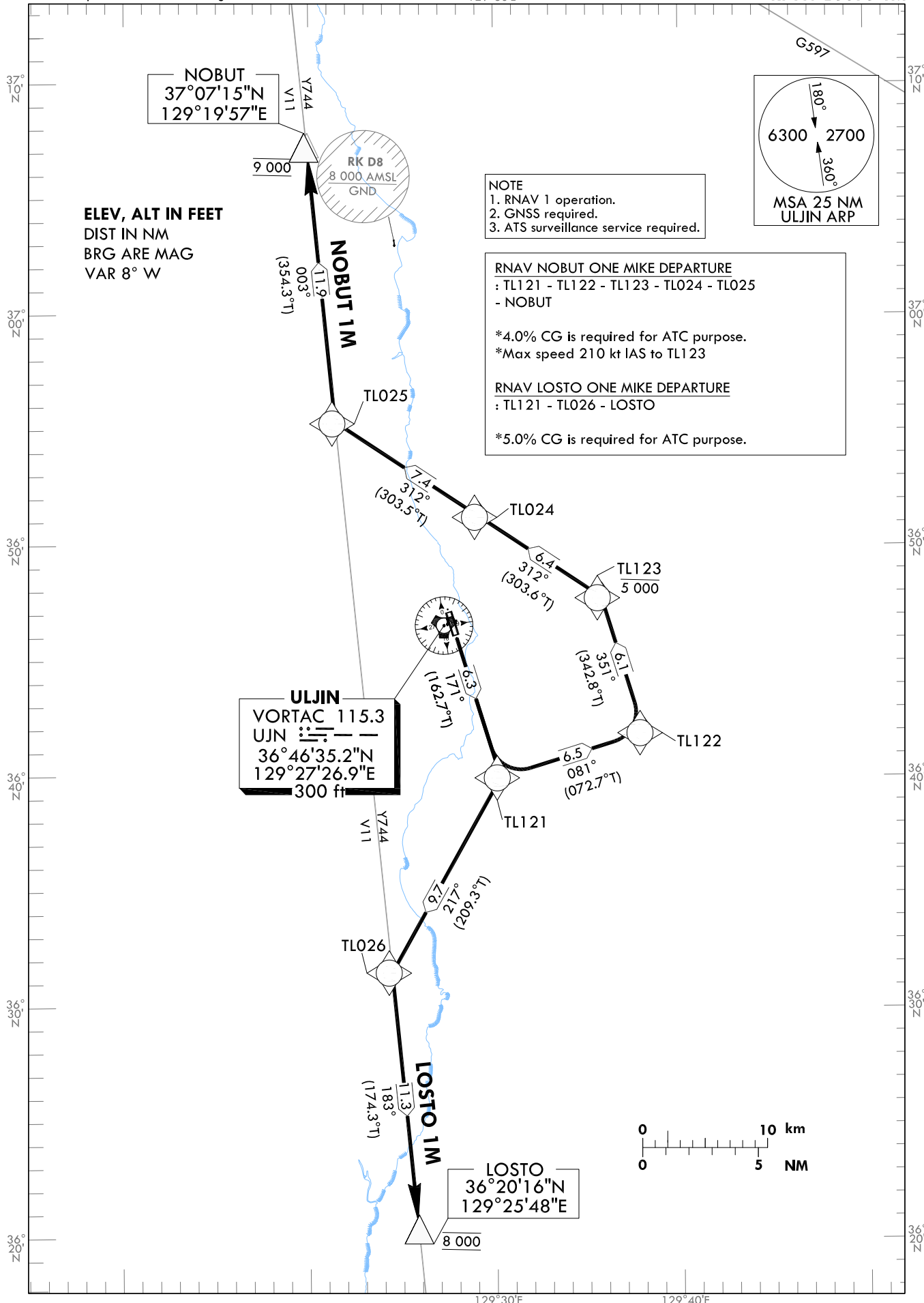
TRANSITION ALT 14 000  
TRANSITION LVL FL 140

POHANG DEP 120.875  
317.65  
ULJIN TWR 118.55  
317.45

**ULJIN/ULjin(RKTL)  
RWY 17  
RNAV NOBUT 1M  
RNAV LOSTO 1M**

Note : Departure under ICAO flight Procedures.

129°30'E



AERONAUTICAL DATA TABULATION

Standard Instrument Departure Procedure Coding Tables

Serial Number	Path Descriptor	Waypoint Identifier	Fly-over	Course/Track °M(°T)	Distance (NM)	Turn direction	Altitude (ft)	Speed (kt)	Coordinates	VPA/TCH	Navigation specification	Remarks
001	CF	TL121	-	171(162.7)	6.3	-	-	-210	36°39'57.5"N 129°30'16.9"E	-	RNAV 1	-
002	TF	TL122	-	081(072.7)	6.5	-	-	-210	36°41'53.2"N 129°37'60.0"E	-	RNAV 1	-
003	TF	TL123	-	351(342.8)	6.1	-	-5 000	-210	36°47'45.8"N 129°35'44.3"E	-	RNAV 1	-
004	TF	TL024	-	312(303.6)	6.4	-	-	-	36°51'17.2"N 129°29'07.5"E	-	RNAV 1	-
005	TF	TL025	-	312(303.5)	7.4	-	-	-	36°55'22.2"N 129°21'26.0"E	-	RNAV 1	-
006	TF	NOBUT	-	003(354.3)	11.9	-	@9 000	-	37°07'15.1"N 129°19'56.6"E	-	RNAV 1	-

Serial Number	Path Descriptor	Waypoint Identifier	Fly-over	Course/Track °M(°T)	Distance (NM)	Turn direction	Altitude (ft)	Speed (kt)	Coordinates	VPA/TCH	Navigation specification	Remarks
001	CF	TL121	-	171(162.7)	6.3	-	-	-	36°39'57.5"N 129°30'16.9"E	-	RNAV 1	-
002	TF	TL026	-	217(209.3)	9.7	-	-	-	36°31'29.8"N 129°24'24.6"E	-	RNAV 1	-
003	TF	LOSTO	-	183(174.3)	11.3	-	@8 000	-	36°20'15.8"N 129°25'48.3"E	-	RNAV 1	-

Change : Amended coordinate format.

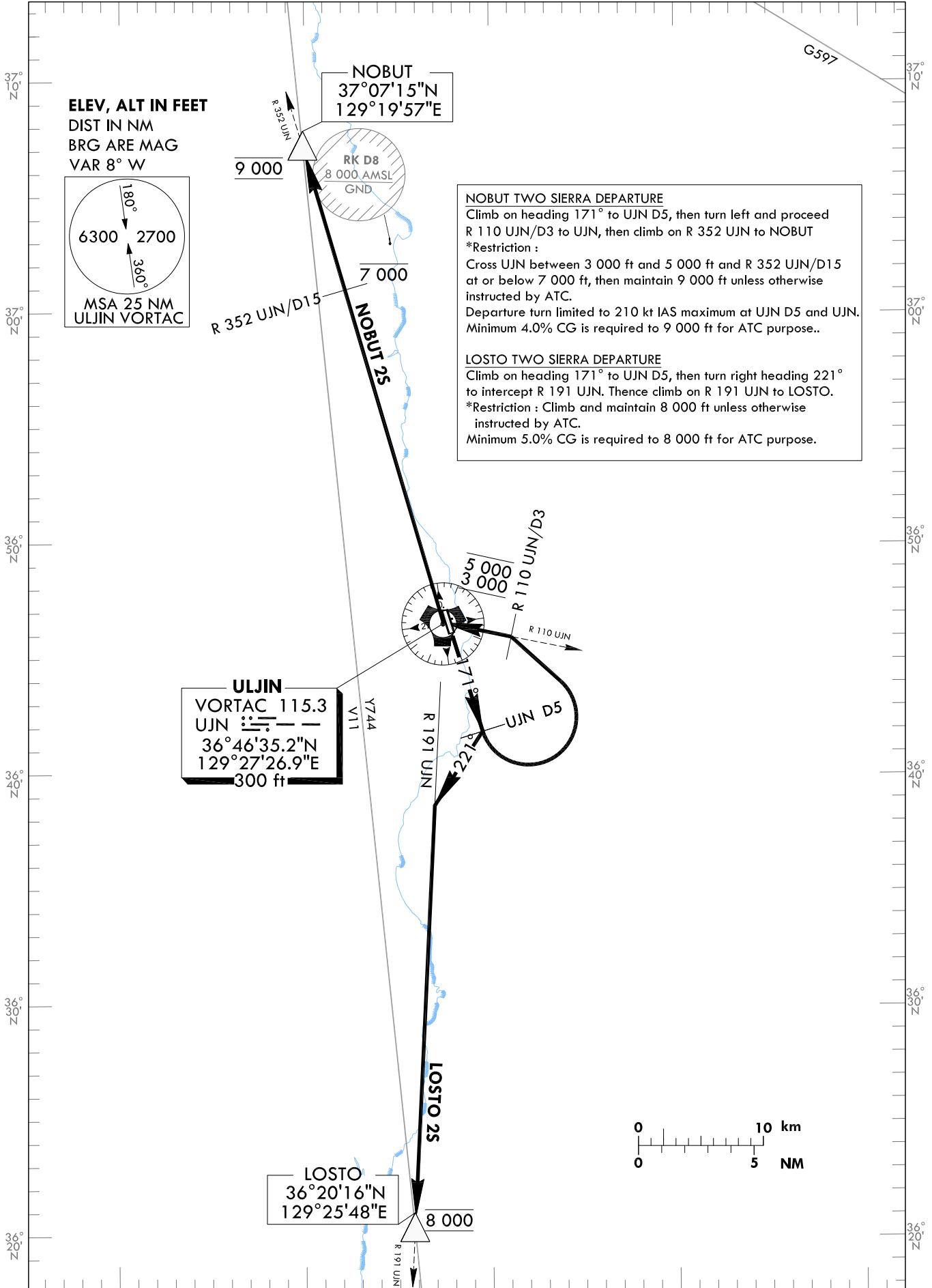
STANDARD DEPARTURE CHART  
INSTRUMENT(SID) - ICAO

TRANSITION ALT 14 000  
TRANSITION LVL FL 140

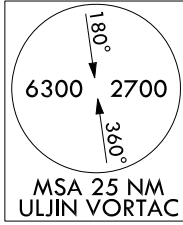
POHANG DEP	120.875
	317.65
ULJIN TWR	118.55
	317.45

ULJIN/ULjin(RKTL)  
RWY 17  
NOBUT 2S  
LOSTO 2S

Note : Departure under ICAO flight Procedures.



ELEV, ALT IN FEET  
DIST IN NM  
BRG ARE MAG  
VAR 8° W



**NOBUT TWO SIERRA DEPARTURE**  
Climb on heading 171° to UJN D5, then turn left and proceed R 110 UJN/D3 to UJN, then climb on R 352 UJN to NOBUT  
\*Restriction :  
Cross UJN between 3 000 ft and 5 000 ft and R 352 UJN/D15 at or below 7 000 ft, then maintain 9 000 ft unless otherwise instructed by ATC.  
Departure turn limited to 210 kt IAS maximum at UJN D5 and UJN. Minimum 4.0% CG is required to 9 000 ft for ATC purpose..

**LOSTO TWO SIERRA DEPARTURE**  
Climb on heading 171° to UJN D5, then turn right heading 221° to intercept R 191 UJN. Thence climb on R 191 UJN to LOSTO.  
\*Restriction : Climb and maintain 8 000 ft unless otherwise instructed by ATC.  
Minimum 5.0% CG is required to 8 000 ft for ATC purpose.

**ULJIN**  
VORTAC 115.3  
UJN  
36°46'35.2"N  
129°27'26.9"E  
300 ft

**LOSTO**  
36°20'16"N  
129°25'48"E

Change : Information of POHANG DEP frequency.

**INTENTIONALLY**

**LEFT**

**BLANK**

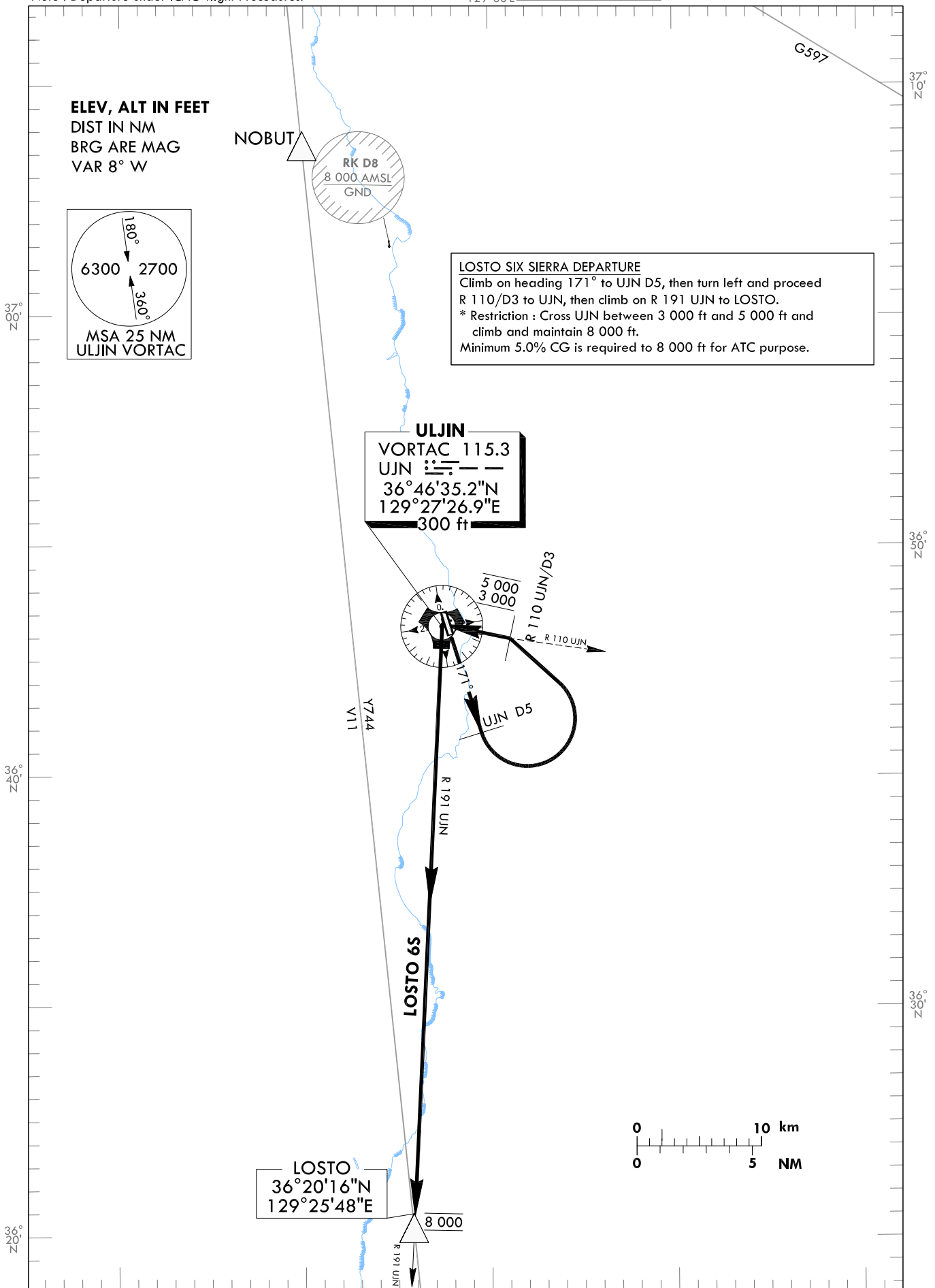
STANDARD DEPARTURE CHART  
INSTRUMENT(SID) - ICAO

TRANSITION ALT 14 000  
TRANSITION LVL FL 140

POHANG DEP 120.875  
317.65  
ULJIN TWR 118.55  
317.45

ULJIN/ULjin(RKTL)  
RWY 17  
LOSTO 6S

Note : Departure under ICAO flight Procedures.

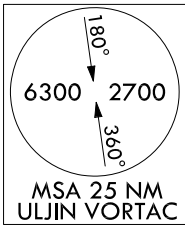


**LOSTO SIX SIERRA DEPARTURE**  
Climb on heading 171° to UJN D5, then turn left and proceed R 110/D3 to UJN, then climb on R 191 UJN to LOSTO.  
\* Restriction : Cross UJN between 3 000 ft and 5 000 ft and climb and maintain 8 000 ft.  
Minimum 5.0% CG is required to 8 000 ft for ATC purpose.

**ULJIN**  
VORTAC 115.3  
UJN  
36°46'35.2"N  
129°27'26.9"E  
300 ft

**LOSTO**  
36°20'16"N  
129°25'48"E  
8 000

ELEV, ALT IN FEET  
DIST IN NM  
BRG ARE MAG  
VAR 8° W



Change : Information of POHANG DEP frequency.

129°40'E

**INTENTIONALLY**

**LEFT**

**BLANK**

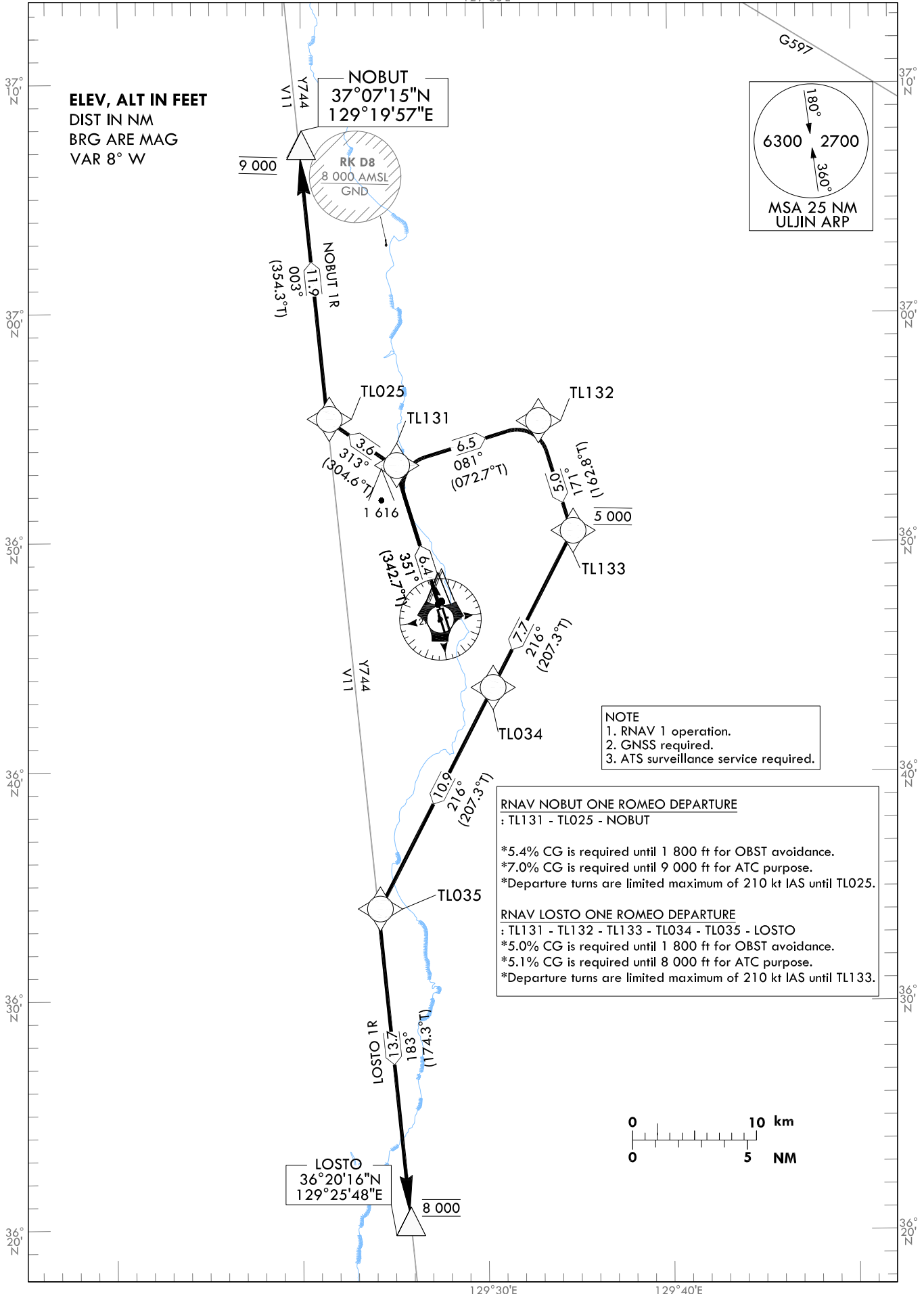
**STANDARD  
DEPARTURE CHART  
INSTRUMENT(SID) - ICAO**

TRANSITION ALT 14 000  
TRANSITION LVL FL 140

POHANG DEP 120.875  
317.65  
ULJIN TWR 118.55  
317.45

**ULJIN/ULjin(RKTL)  
RWY 15  
RNAV NOBUT 1R  
RNAV LOSTO 1R**

Note : Departure under ICAO flight Procedures.



ULJIN/Uljin(RKTL)  
RWY 35  
RNAV NOBUT 1R  
RNAV LOSTO 1R

AERONAUTICAL DATA TABULATION

Standard Instrument Departure Procedure Coding Tables

RNAV NOBUT 1R												
Serial Number	Path Descriptor	Waypoint Identifier	Fly-over	Course/Track °M(°T)	Distance (NM)	Turn direction	Altitude (ft)	Speed (kt)	Coordinates	VPA/TCH	Navigation specification	Remarks
001	CF	TL131	-	351(342.7)	6.4	-	-	-210	36°53'20.2"N 129°25'06.2"E	-	RNAV 1	-
002	TF	TL025	-	313(304.6)	3.6	-	-	-210	36°55'22.2"N 129°21'26.0"E	-	RNAV 1	-
003	TF	NOBUT	-	003(354.3)	11.9	-	@9 000	-	37°07'15.1"N 129°19'56.6"E	-	RNAV 1	-

RNAV LOSTO 1R												
Serial Number	Path Descriptor	Waypoint Identifier	Fly-over	Course/Track °M(°T)	Distance (NM)	Turn direction	Altitude (ft)	Speed (kt)	Coordinates	VPA/TCH	Navigation specification	Remarks
001	CF	TL131	-	351(342.7)	6.4	-	-	-210	36°53'20.2"N 129°25'06.2"E	-	RNAV 1	-
002	TF	TL132	-	081(072.7)	6.5	-	-	-210	36°55'16.2"N 129°32'50.5"E	-	RNAV 1	-
003	TF	TL133	-	171(162.8)	5.0	-	@5 000	-210	36°50'27.4"N 129°34'42.0"E	-	RNAV 1	-
004	TF	TL034	-	216(207.3)	7.7	-	-	-	36°43'35.6"N 129°30'17.9"E	-	RNAV 1	-
005	TF	TL035	-	216(207.3)	10.9	-	-	-	36°33'54.5"N 129°24'06.6"E	-	RNAV 1	-
006	TF	LOSTO	-	183(174.3)	13.7	-	@8 000	-	36°20'15.8"N 129°25'48.3"E	-	RNAV 1	-

Change : Amended coordinate format.



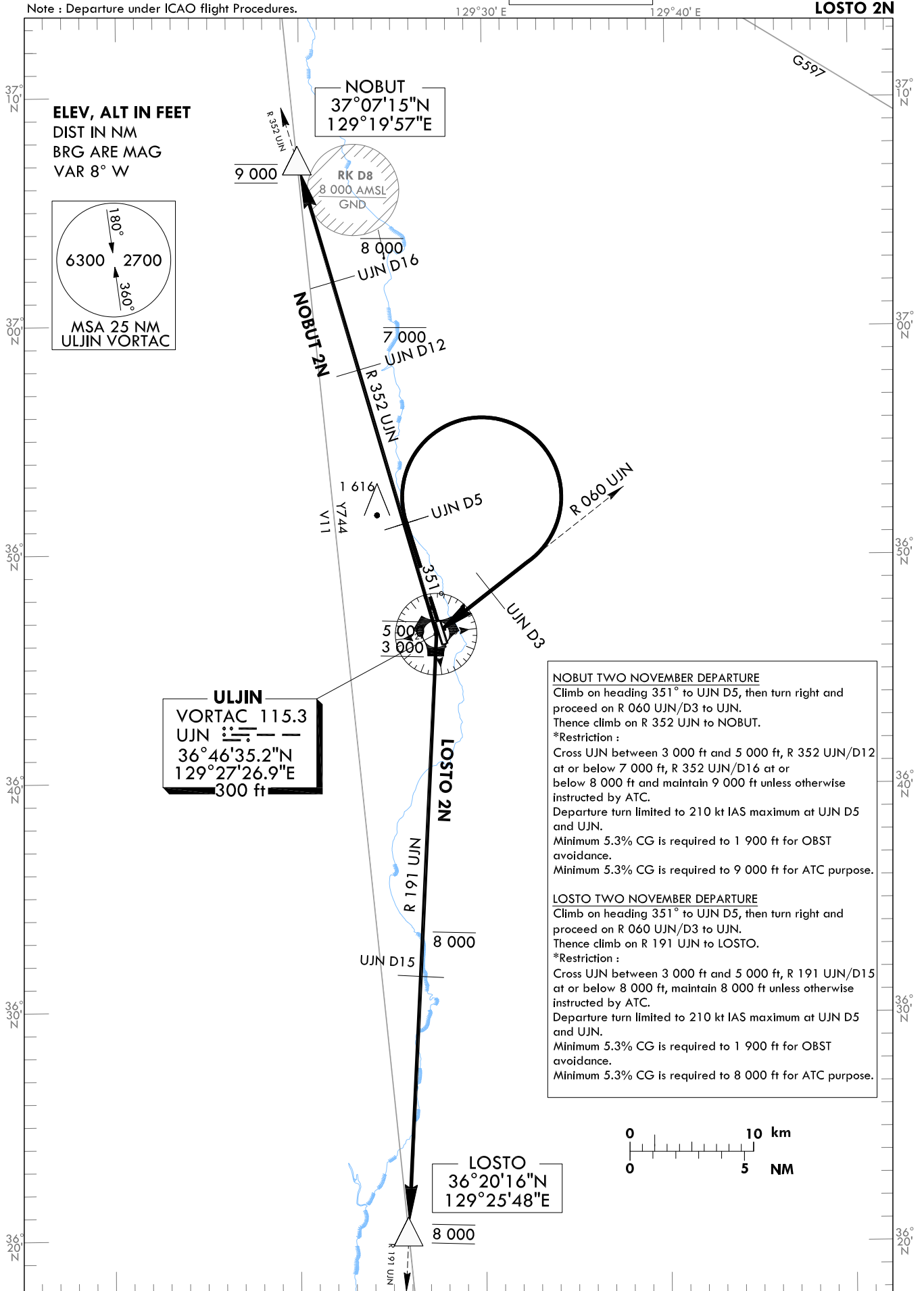
STANDARD DEPARTURE CHART  
INSTRUMENT(SID) - ICAO

TRANSITION ALT 14 000  
TRANSITION LVL FL 140

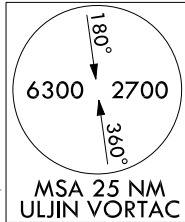
POHANG DEP 120.875  
317.65  
ULJIN TWR 118.55  
317.45

ULJIN/ULjin(RKTL)  
RWY 35  
NOBUT 2N  
LOSTO 2N

Note : Departure under ICAO flight Procedures.



ELEV, ALT IN FEET  
DIST IN NM  
BRG ARE MAG  
VAR 8° W



**ULJIN**  
VORTAC 115.3  
UJN  
36°46'35.2"N  
129°27'26.9"E  
300 ft

**NOBUT TWO NOVEMBER DEPARTURE**  
Climb on heading 351° to UJN D5, then turn right and proceed on R 060 UJN/D3 to UJN. Thence climb on R 352 UJN to NOBUT.  
\*Restriction :  
Cross UJN between 3 000 ft and 5 000 ft, R 352 UJN/D12 at or below 7 000 ft, R 352 UJN/D16 at or below 8 000 ft and maintain 9 000 ft unless otherwise instructed by ATC.  
Departure turn limited to 210 kt IAS maximum at UJN D5 and UJN.  
Minimum 5.3% CG is required to 1 900 ft for OBST avoidance.  
Minimum 5.3% CG is required to 9 000 ft for ATC purpose.

**LOSTO TWO NOVEMBER DEPARTURE**  
Climb on heading 351° to UJN D5, then turn right and proceed on R 060 UJN/D3 to UJN. Thence climb on R 191 UJN to LOSTO.  
\*Restriction :  
Cross UJN between 3 000 ft and 5 000 ft, R 191 UJN/D15 at or below 8 000 ft, maintain 8 000 ft unless otherwise instructed by ATC.  
Departure turn limited to 210 kt IAS maximum at UJN D5 and UJN.  
Minimum 5.3% CG is required to 1 900 ft for OBST avoidance.  
Minimum 5.3% CG is required to 8 000 ft for ATC purpose.



Change : Information of POHANG DEP frequency.

**INTENTIONALLY**

**LEFT**

**BLANK**